

PART# 8015, 8017, 8037, 8038**05-08 MUSTANG CAT-BACK SIDE EXHAUST SYSTEM****Notice: Altered Parts are Non-Refundable****Note: The side exhaust system must be installed before the side skirts.****Note: Do not tighten exhaust clamps or brackets until installation is complete.****Note: The side skirts must be installed before the exhaust tip installation.**

Note V-6 Mustang Only: Comes with a replacement X-pipe (Part # 7083). Follow the Installation Instructions that come with the X-Pipe.

Install the two Cervini's mufflers into the X-pipe using the factory hardware **as shown in fig A.** (For the V6 you will need to purchase a muffler clamp, Ford OEM # 4R3Z5A231AA.) There are two long L-braces and two short L braces, install them to the under side of the car where there are threaded holes in the floor using the supplied bolts and washers **as shown in fig B.** and **fig C.** Install the two bolt band clamps to the other side of the mufflers, slide the bent pipes into the mufflers and attach them to the L braces previously installed using the blue bushings, bolts, and lock nuts in the hardware packet. (With the hanger braces on the pipe facing up you can distinguish left from right.) With the exhaust system in place you can notice the emergency brake cables are touching the exhaust pipes, use the black zip ties to secure them to the lower control arm **as shown in fig D.** The exhaust tips can be installed after the side skirts have been installed. Slide the one bolt band clamp over the tail pipe and then install the exhaust tip through the side skirt opening and into the tail pipe. Exhaust tips must be centered ¼" past the outer edge of the side skirt opening. Failure to do so may cause damage to the side skirt. With the exhaust tip in position, tighten all clamps with an impact gun. Hand tighten all remaining nuts and bolts. Most of the adjustment for centering the exhaust tips is in the short L brace, if centering the the exhaust tip can not be achieved with this L brace you will need to loosen the two bolt band clams on the front or the rear of the muffler and slide the pipes in or out to get more adjustment.

CONVERTIBLE

PART #8017, #8038		
QTY	DESCRIPTION	HARDWARE #
2	MUFFLERS	PYP-MVR200S-SP
1	DRIVERS SIDE TAIL PIPE	PYP-SFM500S
1	PASSENGER SIDE TAIL PIPE	PYP-SFM500S
2	2 BOLT, 2-1/2" BAND CLAMPS	PYP-TT250S
2	1 BOLT, 2-1/2" BAND CLAMPS	PYP-SSC2620
1	PARTS BAG	
4	BLACK ZIP TIES	70215K53
1	DRIVERS SIDE EXHAUST TIP	PYP-EVT500
1	PASSENGER SIDE EXHAUST TIP	PYP-EVT500
2	RIVET STUDS	98075A159
2	HEX CAP SCREWS	91251A622
4	HEX NUTS	94831A031
2	BRACES	TMC-001

**COUPE**

PART #8015, #8037		
QTY	DESCRIPTION	HARDWARE #
2	MUFFLERS	PYP-MVR200S-SP
1	DRIVERS SIDE TAIL PIPE	PYP-SFM500S
1	PASSENGER SIDE TAIL PIPE	PYP-SFM500S
2	2 BOLT, 2-1/2" BAND CLAMPS	PYP-TT250S
2	1 BOLT, 2-1/2" BAND CLAMPS	PYP-SSC2620
1	PARTS BAG	
4	BLACK ZIP TIES	70215K53
1	DRIVERS SIDE EXHAUST TIP	PYP-EVT500
1	PASSENGER SIDE EXHAUST TIP	PYP-EVT500

Fig. A

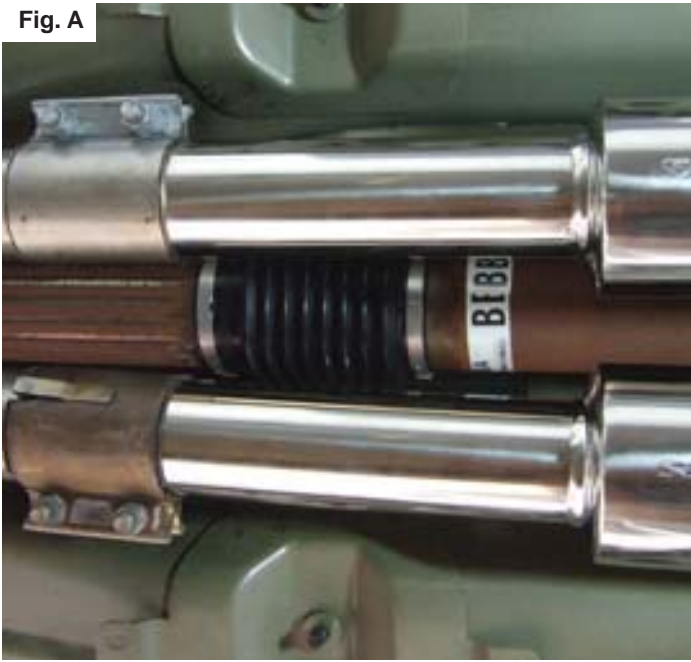


Fig. B

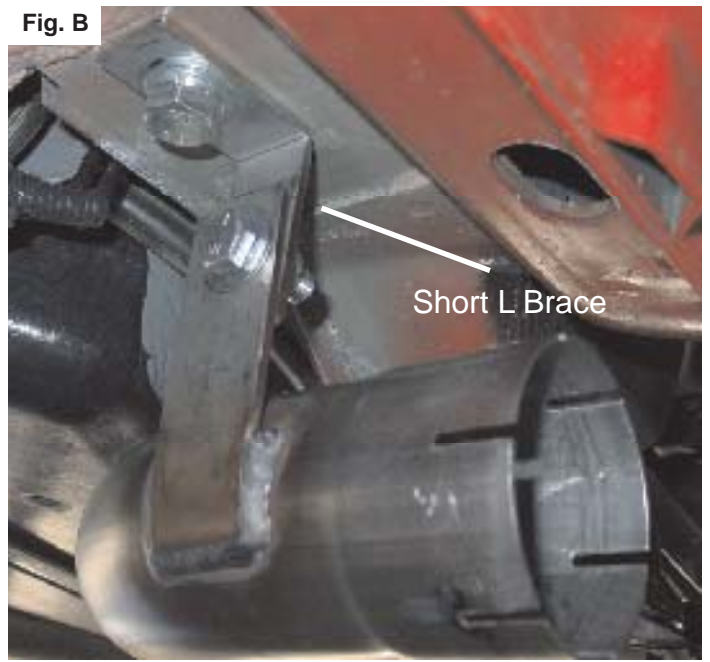


Fig. C

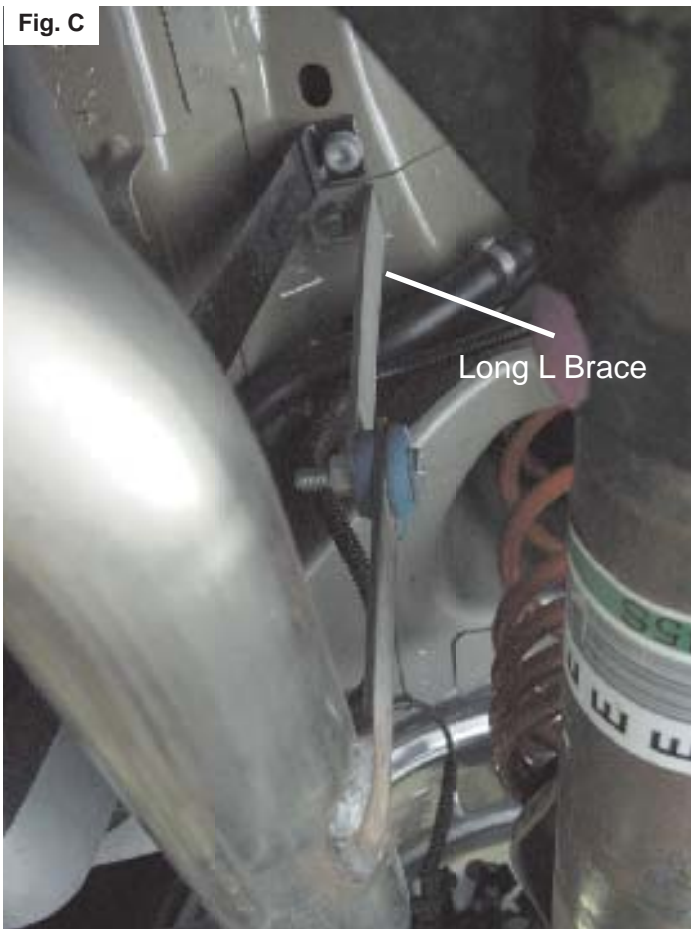
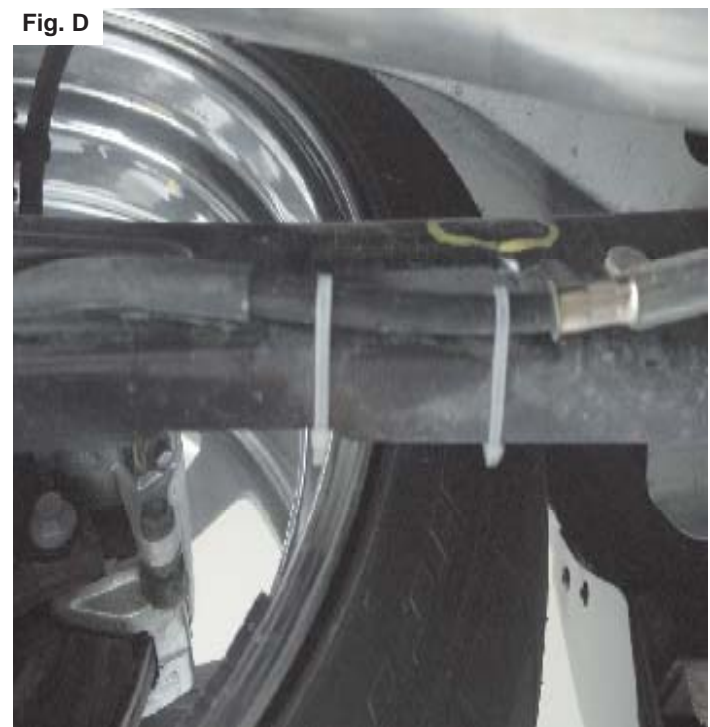


Fig. D



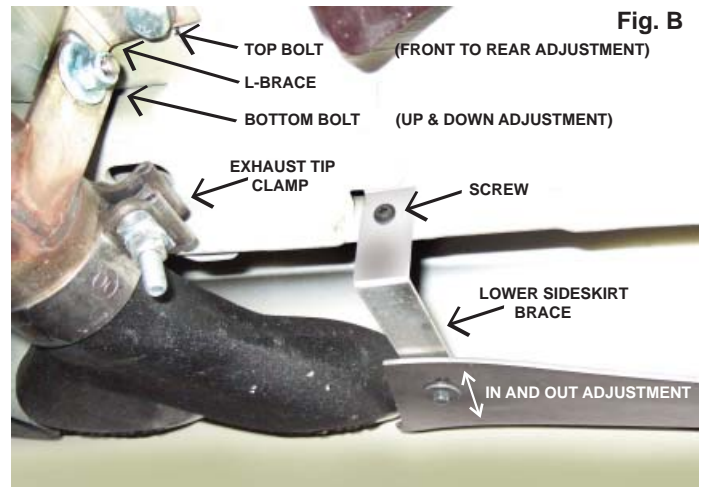
PART #4307**05-08 MUSTANG SIDE SKIRTS FOR SIDE EXHUAUST**

Notice: Prefit Before Painting. Install new, unpainted parts according to these instructions. Then remove parts, paint them and re-install.

Painted or Altered Parts are Non-Refundable

The surface that is in contact with the 3M 2-sided tape must be cleaned with isopropyl alcohol & the temperature must be a minimum of 75 degrees F, before applying . Allow the 2-sided tape to dry 24 hours before driving.

Pre-fitting the side skirts: Remove the factory side skirts and the plastic clips that hold them in place. Hold the new side skirt in place and install the factory push pin in the lower hole of the front wheel well. Drill a 1/8" hole through the top hole in the side skirt and install the screw supplied in the hardware packet. With the inside mounting flange touching the rocker there should be a 1/4" gap from the bottom of the door to the side skirt. While holding the side skirt in place open the door and drill a 1/8" hole through the existing holes in the mounting flange. After the holes have been drilled install the short screws provided in the hardware packet **as shown in fig A**. We have supplied you with a brace for adjustment; mount the brace to the side skirt with the bolt, nut, and washers. Drill a 1/8" hole through the hole in the brace and into the pinch weld then install the screw **as shown in fig. B**. and install the silver screw in the hardware packet. The screws used to mount the side skirts in the wheel well, in front of the rear tire need to be installed after the side skirts have been painted.

**PAINTING INSTRUCTIONS**

VERY IMPORTANT: The following painting procedures **MUST** be followed **EXACTLY** for **PROPER ADHESION** and to prevent fish eyes.

1. To remove any mold release contaminants, clean the back of the part first. Using 2 new clean rags, saturate the first rag with plastic prep cleaner* and begin cleaning. Then use the second rag to remove the prep cleaner. Continuously fold both rags to their clean sides during the process. Use 3 sets of new rags throughout the process. This prevents mold release contaminants from transferring to the painted surface.
2. Repeat step one on the front of the part.
3. Rinse the part with water. Apply a generous amount of Ajax® or sand fix* to a red scuff pad* (3M Scotch Brite Brand) and scrub the surface to be painted **THOROUGHLY** (especially where the 2-sided tape is installed, on the back side of the part, and all the hard to reach areas). Then rinse with water and dry. The scrubbed surface should be dull. If any shiny spots show, repeat the process on those areas.
4. Using another set of clean new rags, again clean the surface to be painted with plastic prep cleaner.
5. Spray the surface to be painted with adhesion promoter* including the areas where the 2-sided tape is installed (follow the instructions on the can for application and drying time).
6. Apply 3 to 4 coats of urethane primer* with flex additive* (follow the instructions on the can for application and drying time).
7. Wet sand primer with 600 grit sandpaper. Be careful not to sand through the primer. If you do, you **MUST** clean those areas with plastic prep cleaner, apply adhesion promoter and prime. Once the primer has dried, wet sand the areas that were touched up. Your surface is now ready for paint.

* These items can be purchased at any auto body supply store.



Installing the side skirts: Included in the hardware packet is a roll of 3M 2-sided tape. After the side skirts have been painted, install the 3m 2sided tape along the guidelines 1/8" away from the outer edge **as shown in fig. C**. Peel and fold about 2" of the red backing from each end of each piece of tape, then place the side skirt on the car so that the red backing is exposed and can be pulled, start with the front of the side skirt and work your way to the back (this will allow you to get the best alignment of the part). Pull the backing slowly. After all the backing is removed, firmly press the edges of the side skirt to securely adhere the tape. Attach the lower brace to the side skirt with the bolt, nut and washers, **DO NOT TIGHTEN THIS BOLT**. At this time you will need to insert the exhaust tip into the exhaust pipe. Adjusting the exhaust tip centered with the opening in the side skirt needs to be done in this order.

Step 1: Align the tip level with the top of the opening in the side skirt and approximately 1/4" out from the opening **as shown in fig.D** then tighten the exhaust tip clamp.

Step 2: Adjust the exhaust up and down to make the tip centered with the opening use the bottom bolt on the L-brace that's connecting the exhaust pipe to the brace and tighten the bolt.

Step 3: Adjust the exhaust front to back to make the tip centered with the opening with the top bolt on the L brace that connects the brace to the floor and tighten the bolt.

Step 4: At this time it may be needed to loosen the clamp that holds the tip, readjust the tip and tighten the clamp before proceeding.

Step 5: The front of the exhaust opening can be adjusted in and out with the lower brace **as shown in fig. B**.

Step 6: Adjust the back of the opening by pulling the lower part of the side skirt out and with a 1/8" drill bit, drill and install a screw in the bottom hole in the wheel well **as shown in fig. E**. Apply some pressure in to the top of the skirt then drill and install the top screw.

Fig. C



Fig. D

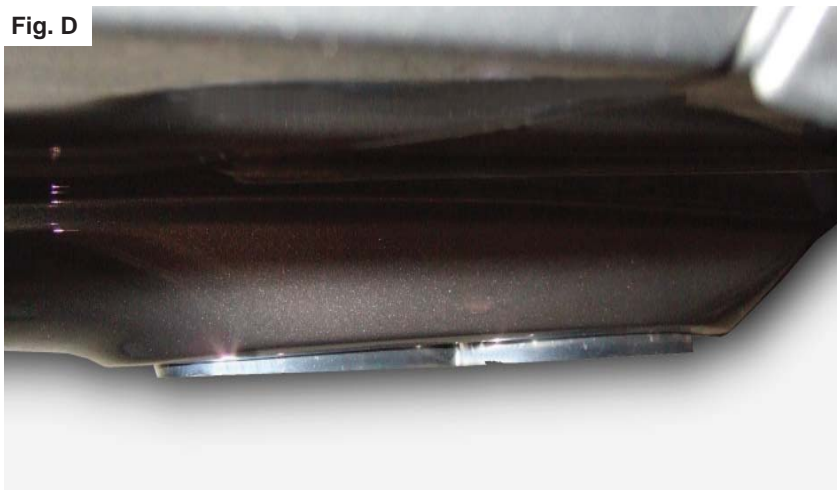
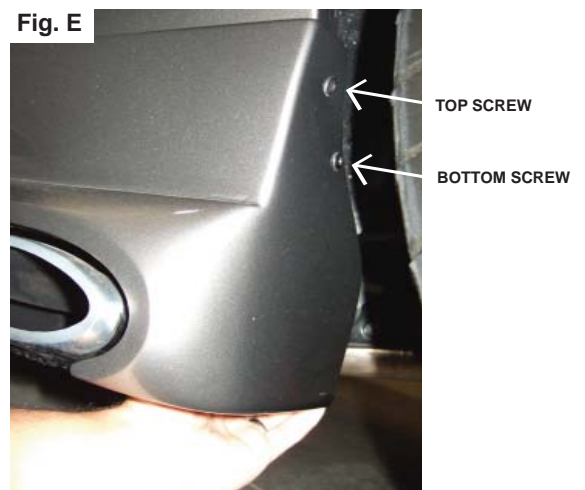


Fig. E



PART #4307		
QTY	DESCRIPTION	HARDWARE #
1	ROLL OF 2-SIDED TAPE	VHB 124
20	FLAT-HEAD PHILLIPS SCREWS	32144
2	HEX BOLTS	13003
2	HEX NUTS	36102
4	WASHERS	33004
2	L-BRACES	TEM-027



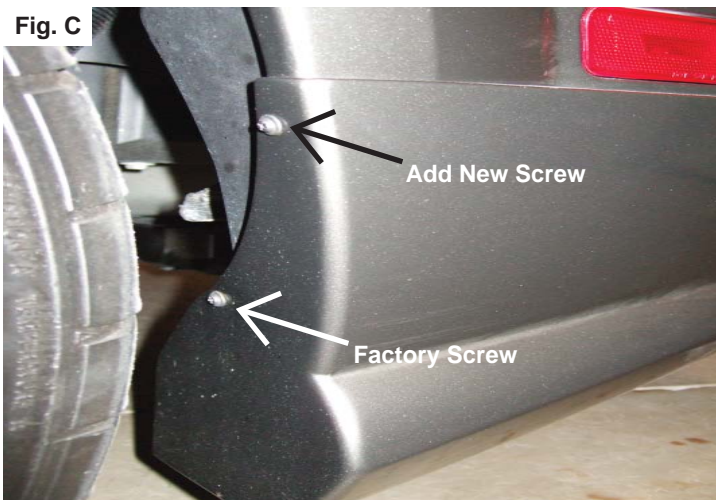
PART #4308 05-08 MUSTANG REAR VALANCE

Notice: Prefit Before Painting. Install new, unpainted parts according to these instructions. Then remove parts, paint them and re-install.

Painted or Altered Parts are Non-Refundable

The surface that is in contact with the 3M 2-sided tape must be cleaned with isopropyl alcohol & the temperature must be a minimum of 75 degrees F, before applying . Allow the 2-sided tape to dry 24 hours before driving.

Pre-fitting the rear valance: Remove the factory cat-back exhaust system. Remove the bottom screw on each side in each wheel well that holds the rear bumper in place. Place a piece of ¼" tape along the bottom of the marker light on each side of the bumper **as shown in fig. A**. this piece of tape is used as a guide for aligning the rear valance. Hold the rear valance in place along the bottom of the ¼" tape and reinstall the factory screws in each wheel well. Tape each corner up in place to secure the valance **as shown in fig. B**. Drill a 1/8" hole through the existing hole in each wheel well and install the long screws provided in the hardware packet **as shown in fig. C**. Drill a 1/8" hole through the existing holes on the bottom of the rear valance and install the short screws provided in the hardware packet **as shown in fig. D**.

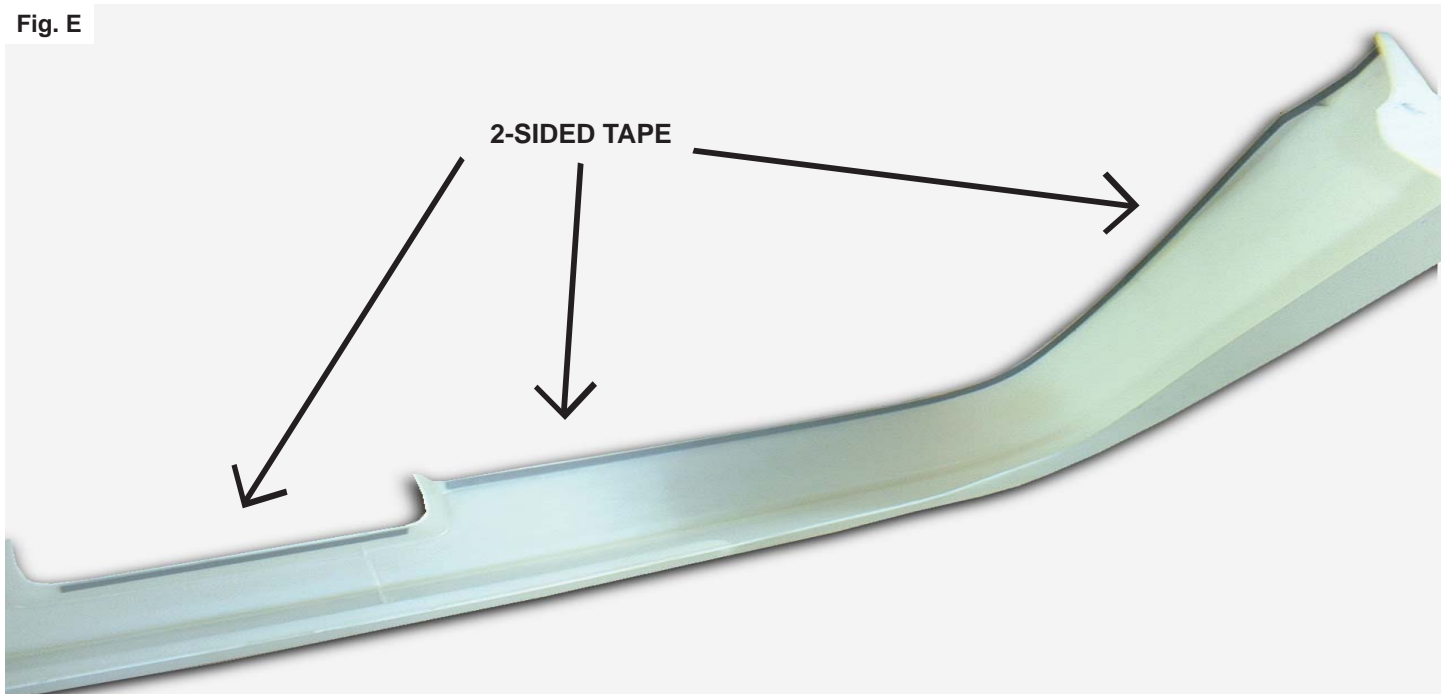


PART #4308		
QTY	DESCRIPTION	HARDWARE #
1	ROLL OF 3-M 2-SIDED TAPE	VHB-202
6	PHILLIPS SCREWS	10947-01704



Installing the rear valance: Included in the hardware packet is a roll of 3M 2-sided tape. After the rear valance has been painted, install the 3M 2-sided tape along the guidelines 1/8" away from the outer edge **as shown in fig. E**. Remove the backing from the piece of tape that you installed on the rear valance under the tag area. Peel and fold about 2" of the red backing from each end of the other pieces of tape, then place the rear valance on the car so that the red backing is exposed and can be pulled. Reinstall the factory screws in each wheel well. Tape each corner in place to secure the valance **as shown in fig. B**. Start pulling the red backing slowly from the tag area of the valance and work your way to the wheel well for each piece of tape (this will allow you to get the best alignment of the part). After all the backing is removed, firmly press the edges of the side skirt to securely adhere the tape. Install the screws in each wheel well and the bottom of the valance.

Fig. E



PAINTING INSTRUCTIONS

VERY IMPORTANT: The following painting procedures MUST be followed EXACTLY for PROPER ADHESION and to prevent fish eyes.

1. To remove any mold release contaminants, clean the back of the part first. Using 2 new clean rags, saturate the first rag with plastic prep cleaner* and begin cleaning. Then use the second rag to remove the prep cleaner. Continuously fold both rags to their clean sides during the process. Use 3 sets of new rags throughout the process. This prevents mold release contaminants from transferring to the painted surface.
2. Repeat step one on the front of the part.
3. Rinse the part with water. Apply a generous amount of Ajax® or sand fix* to a red scuff pad* (3M Scotch Brite Brand) and scrub the surface to be painted THOROUGHLY (especially where the 2-sided tape is installed, on the back side of the part, and all the hard to reach areas). Then rinse with water and dry. The scrubbed surface should be dull. If any shiny spots show, repeat the process on those areas.
4. Using another set of clean new rags, again clean the surface to be painted with plastic prep cleaner.
5. Spray the surface to be painted with adhesion promoter* including the areas where the 2-sided tape is installed (follow the instructions on the can for application and drying time).
6. Apply 3 to 4 coats of urethane primer* with flex additive* (follow the instructions on the can for application and drying time).
7. Wet sand primer with 600 grit sandpaper. Be careful not to sand through the primer. If you do, you MUST clean those areas with plastic prep cleaner, apply adhesion promoter and prime. Once the primer has dried, wet sand the areas that were touched up. Your surface is now ready for paint.

* These items can be purchased at any auto body supply store.

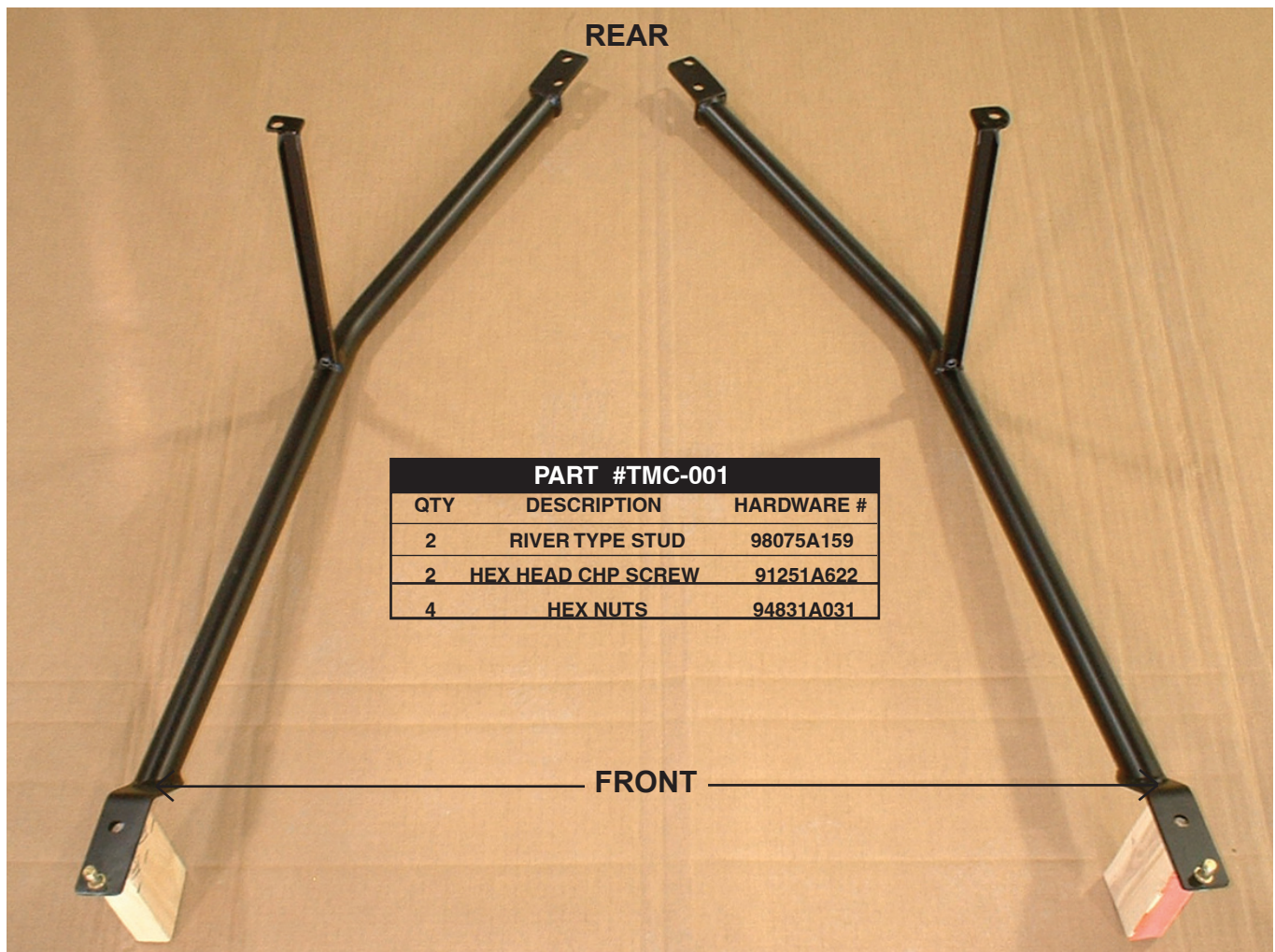


05-07 MUSTANG CONVERTIBLE REPLACEMENT LOWER SUPPORTS

NOTICE: Reinstall all bolts with medium strength locktite.

NOTICE: The car must be jacked & supported from the suspension for the install of these supports.

Remove the lower factory supports and the gas tank deflector shields that are in the front of the gas tank. Install our side exhaust kit and then the replacement lower support as follows in fig.A. (DO NOT INSTALL THE SMALLER UPRITE SUPPORTS AT THIS TIME). The front of the supports attach to the frame rails with the center bolt from the gas tank deflector shields. There is another hole were you will have to drill a 33/64" hole. Remove the supports. Thread the nut just flush with the threads on the insert and tap the insert into the drilled hole with a hammer. Reinstall the supports and tighten all the bolts. With a impact gun, impact the washer and the nut onto the threaded insert.(this will allow the insert to crimp like a rivet in the frame. The smaller supports attach to the same location as the exhaust hangers.



XFM43/ XFM44

409 Stainless Steel 2005-07 Ford Mustang X-pipes

XFM43: 2005-07 Mustang After-Cat X-Pipe

XFM44: 2005-07 V6 Mustang After-Cat X-Pipe



Thanks again for purchasing your new 409 stainless steel Pypes Performance Exhaust 05-08 Ford Mustang GT X-pipe. Please be sure to confirm all the components in the kit were received in your shipment before beginning installation. These kits will include your new x-pipe with 02 bungs and installation hardware. If you find any component missing, please contact our office at 800-421-3890 for replacement. Installation of this kit will require a few simple hand tools, a cutting device and penetrating oil. For a quicker and tighter installation, air tools are recommended. Technical assistance is available both online at www.pypesexhaust.com or 800-421-3890.

Pypes Performance Exhaust
2705 Clemens Road Bldg 105A Hatfield, PA 19440
800-421-3890 (voice) 267-638-3507 (fax)
www.pypesexhaust.com

XFM43 or XFM44

These X-pipes are designed to convert your factory h-pipe into an x-pipe without voiding the manufacturers warranty. This installation will require simple hand tools and a cutting device such as a hack saw, cut-off wheel or a Sawsall.

1. Before unbolting any part of you existing factory h-pipe, line up the two hanger points on the Pypes After-cat x-pipe with the factory mounting points on the transmission crossmember. Mark a cutting line on your factory h-pipe approximately in the middle of the expanded end of the new x-pipe. This line should be 8"-9" inches behind your factory catalytic converters. Once you have checked the measurement twice, make the cuts through the driver and passenger pipes. Make sure to deburr the two cuts, to allow for a good seal and flow once the new X-pipe is installed.

2: Now you can unbolt the factory bandclamps located at the factory midpipes. Once undone you will be able to drop out the the cut portion of your original h-pipe.

3: You can now install your new x-pipe. Slide the x-pipe hanger through the factory mounting points, slide on the factory band clamps and install the HVC21 band clamps on the front of the x-pipe. You can now tighten all the clamps.

4. Test drive the car for several miles and inspect for leaks or loose connections. A black residue around a connection indicates an exhaust leak.

5. After around 50 miles of driving, re-inspect for leaks and loose connections.



Note: Any 2008-10 V6 or GT owners with vehicles sent from the factory without the two transmission cross-member exhaust hangers must purchase them from your local dealer and install them in the proper mounting hole to insure your new x-pipe will fit properly.