

Part # 8053 13-14 Mustang & 10-14 GT500 SIDE EXHAUST SYSTEM

**Notice: The side exhaust system must be installed before the side skirt.
Do not tighten exhaust clamps or brackets until installation is complete
The side skirts must be installed before the exhaust tip installation.**

Step 1 Install mufflers:

Install the two Cervini's mufflers into the X-pipe using the factory hardware **as shown in fig A.**

Fig.A



Step 2 Install Exhaust L-Braces:

There are two long L-braces and two short L braces, install them to the under side of the car where there are threaded holes in the floor using the supplied bolts and washers **as shown in fig B.** and **fig C.**

Fig.B

Short L Brace

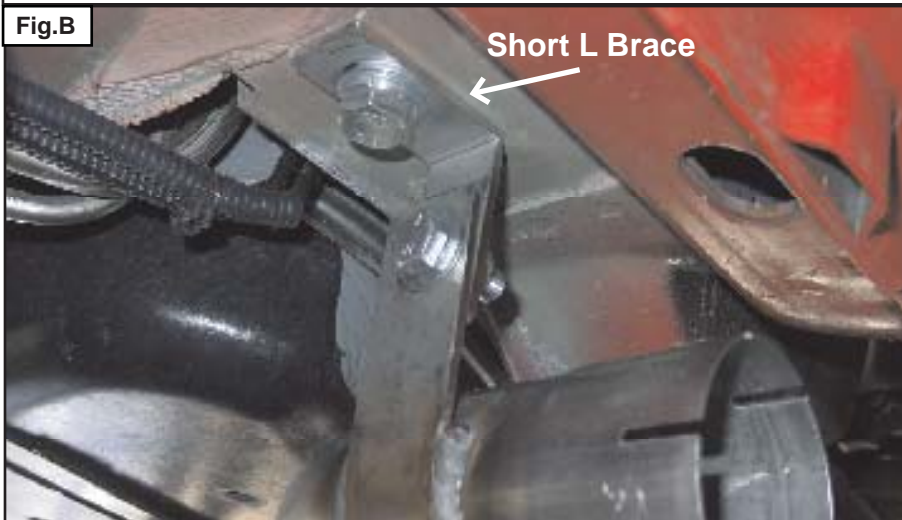
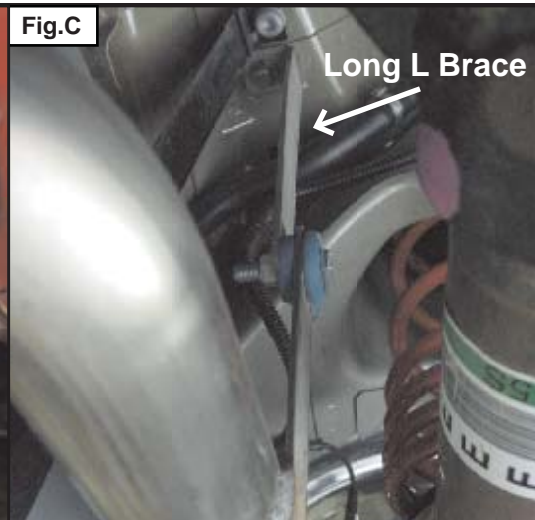


Fig.C

Long L Brace



PART #8053

QTY	DESCRIPTION	HARDWARE #
2	MUFFLERS	PYP-MVR200S-SP
1	DRIVER SIDE TAIL PIPE	PYP-SFM500S
1	PASSENGER SIDE TAIL PIPE	PYP-SFM500S
2	1 BOLT, 2-1/2" BAND CLAMPS	PYP-SSC2620

PART #8053

QTY	DESCRIPTION	HARDWARE #
1	PARTS BAG	
4	BLACK ZIP TIES	70215K53
1	DRIVERS SIDE EXHAUST TIP	PYP-EVT500
1	PASSENGER SIDE EXHAUST TIP	PYP-EVT500

Step 3 Apply 3M Double Sided Tape:

Install the two bolt band clamps to the other side of the mufflers, slide the bent pipes into the mufflers and attach them to the L braces previously installed using the blue bushings, bolts, and lock nuts in the hardware packet. (With the hanger braces on the pipe facing up you can distinguish left from right.) With the exhaust system in place you can notice the emergency brake cables are touching the exhaust pipes, use the black zip ties to secure them to the lower control arm **as shown in fig D.**

Fig.D**Step 4** Install Exhaust Tips:

The exhaust tips can be installed after the side skirts have been installed. Slide the one bolt band clamp over the tail pipe and then install the exhaust tip through the side skirt opening and into the tail pipe. Exhaust tips must be centered $\frac{1}{4}$ " past the outer edge of the side skirt opening. Failure to do so may cause damage to the side skirt.

Step 4 Final Tightening & Adjustments:

With the exhaust tip in position, tighten all clamps with an impact gun. Hand tighten all remaining nuts and bolts. Most of the adjustment for centering the exhaust tips is in the short L brace, if centering the the exhaust tip can not be achieved with this L brace you will need to loosen the two bolt band clams on the front or the rear of the muffler and slide the pipes in or out to get more adjustment.

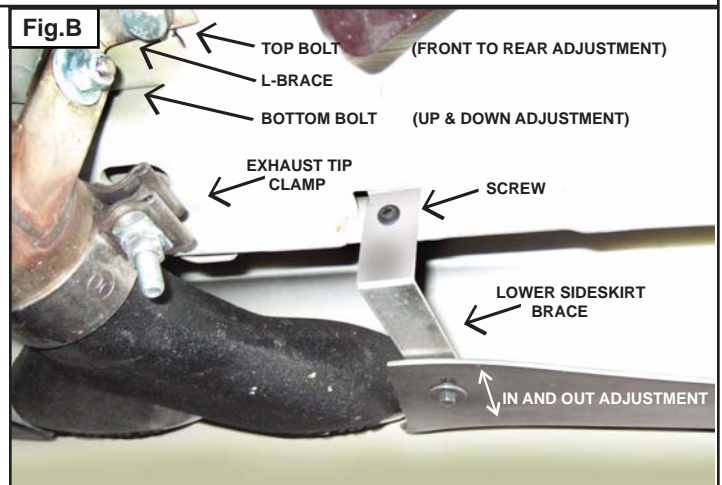
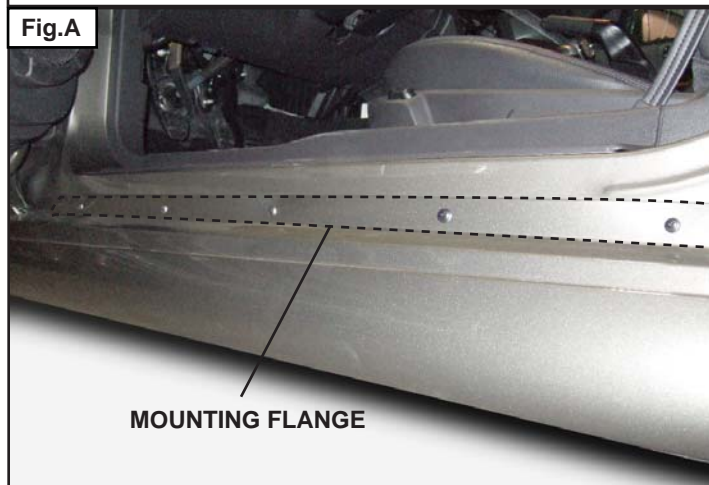
Part # 4307 / 4391 05-14 Mustang SIDE SKIRTS FOR SIDE EXHAUST

Notice: Prefit Before Painting. Install new, unpainted parts according to these instructions. Then remove parts, paint them and re-install. Painted or Altered Parts are Non-Refundable

The surface that is in contact with the 3M 2-sided tape must be cleaned with isopropyl alcohol & the temperature must be a minimum of 75 degrees F, before applying . Allow the 2-sided tape to dry 24 hours before driving.

Step 1 Pre-fitting the side skirts:

Remove the factory side skirts and the plastic clips that hold them in place. Hold the new side skirt in place and install the factory push pin in the lower hole of the front wheel well. Drill a 1/8" hole through the top hole in the side skirt and install the screw supplied in the hardware packet. With the inside mounting flange touching the rocker there should be a 1/4" gap from the bottom of the door to the side skirt. While holding the side skirt in place open the door and drill a 1/8" hole through the existing holes in the mounting flange. After the holes have been drilled install the short screws provided in the hardware packet **as shown in fig A**. We have supplied you with a brace for adjustment; mount the brace to the side skirt with the bolt, nut, and washers. Drill a 1/8" hole through the hole in the brace and into the pinch weld then install the screw **as shown in fig. B**. and install the silver screw in the hardware packet. The screws used to mount the side skirts in the wheel well, in front of the rear tire need to be installed after the side skirts have been painted. See Painting Instructions On Page #3.



PART #8053		
QTY	DESCRIPTION	HARDWARE #
1	ROLL OF 2-SIDED TAPE	VHB 124
20	FLAT-HEAD PHILLIPS SCREWS	32144
2	HEX BOLTS	13003
2	HEX NUTS	36102
4	WASHERS	33004
2	L-BRACES	TEM-027

Step 2 Installing the side skirts:

Included in the hardware packet is a roll of 3M 2-sided tape. After the side skirts have been painted, install the 3m 2sided tape along the guidelines 1/8" away from the outer edge **as shown in fig. C**. Peel and fold about 2" of the red backing from each end of each piece of tape, then place the side skirt on the car so that the red backing is exposed and can be pulled, start with the front of the side skirt and work your way to the back (this will allow you to get the best alignment of the part). Pull the backing slowly. After all the backing is removed, firmly press the edges of the side skirt to securely adhere the tape. Attach the lower brace to the side skirt with the bolt, nut and washers, **DO NOT TIGHTEN THIS BOLT**. At this time you will need to insert the exhaust tip into the exhaust pipe. Adjusting the exhaust tip centered with the opening in the side skirt needs to be done in this order.

Fig.C**Step 3**

Align the tip level with the top of the opening in the side skirt and approximately 1/4" out from the opening **as shown in fig.D** then tighten the exhaust tip clamp.

Fig.D**Step 4**

Adjust the exhaust up and down to make the tip centered with the opening use the bottom bolt on the L-brace that's connecting the exhaust pipe to the brace and tighten the bolt.

Step 5

Adjust the exhaust front to back to make the tip centered with the opening with the top bolt on the L brace that connects the brace to the floor and tighten the bolt.

Step 6

At this time it may be needed to loosen the clamp that holds the tip, readjust the tip and tighten the clamp before proceeding.

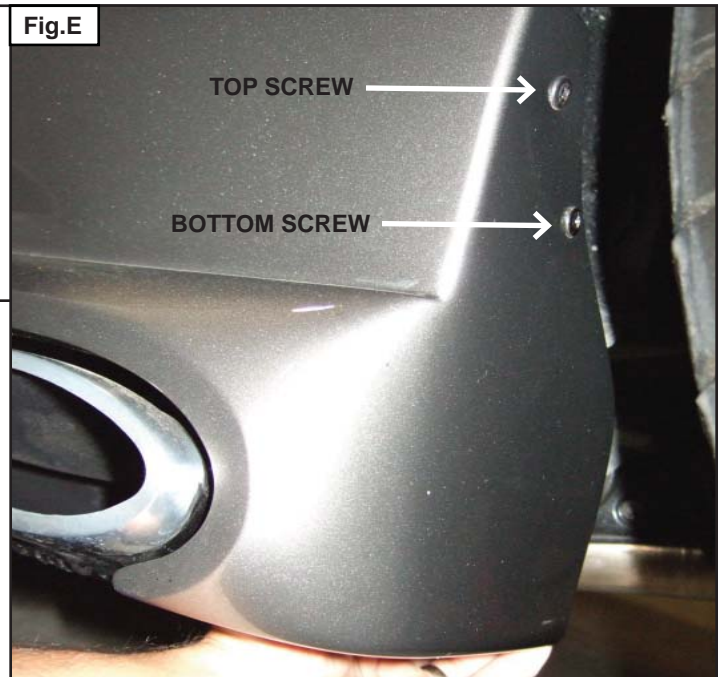
Step 7

The front of the exhaust opening can be adjusted in and out with the lower brace **as shown in fig. B (Fig. B. shown on previous page)**.

Step 8

Adjust the back of the opening by pulling the lower part of the side skirt out and with a 1/8" drill bit, drill and install a screw in the bottom hole in the wheel well **as shown in fig. E**. Apply some pressure in to the top of the skirt then drill and install the top screw.

Fig.E



Part # 4406 13-14 Mustang & 10-14 GT500 REAR VALANCE

Notice: Pre fit before painting! Install new, unpainted parts according to these instructions! Then remove parts, paint them and re-install! Painted or Altered Parts are Non-Refundable! After the parts have been primed and painted install the double sided tape! The surface where the 3M double sided tape is contacting must be cleaned with isopropyl alcohol and be a minimum of 75 degrees F constant throught the drying process! Allow the 2-sided tape to dry 24 hours before driving!

Step 1 Uninstall Factory Exhaust & Rear Bumper:

Remove the factory cat-back exhaust system, rear bumper and reflectors.
(Keep all factory hardware & 2 Reflectors! They will be reused!)

Step 2 (BOSS, GT500 & GTCS ONLY) Uninstall Factory Lower Valance:

Remove the black factory lower valance from the bumper and reinstall the back bumper to the car with out the factory lower valance.

Step 3 Install Reflectors:

Install factory Left & Right reflectors into the Cervini lower valance center section. Line up reflectors in the recessed Left & Right locations and firmly click in the mounting tabs **as shown in fig. A & B.**

Fig.A

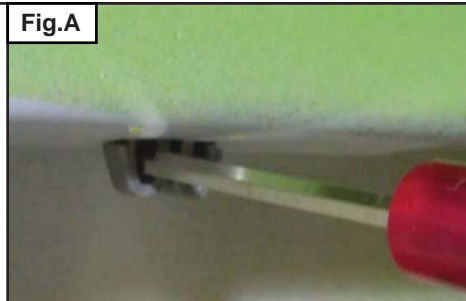


Fig.B



Step 3 Apply 3M Double Sided Tape:

(Only after the valance has been painted! If you are test fitting go to next step!) Install the 3M double sided tape along the top guideline of the Cervini lower valance 1/8" away from the top edge of the part **as shown in fig.C.** Peel and fold about 2" of the red backing from each end of tape, so when you place the lower valance on the rear bumper, the red backing is exposed and can be pulled. **(This will allow you to get the best alignment of the part.)**

Fig.C



PART # 4406

QTY	DESCRIPTION	HARDWARE #
1	ROLL OF 1/2" 2-SIDED TAPE	VHB 170

Step 4 Rear Valance Mounting:
 Align the rear valance with the back of the bumper **as shown in fig.D**. Reinstall the factory screws in the wheel wells, **as shown in fig. E**.



Step 5 Final Valance Installation:
(Only after the valance has been painted and double sided tape has been installed!) With the top screw in the wheel wells and the supplied bolts installed in the mounting tabs, pull the red backing from the double sided tape slowly. After all the backing is removed, firmly press along the top edge of the valance to securely adhere the tape. Reinstall the remaining wheel well screws.

URETHANE PAINTING INSTRUCTIONS

VERY IMPORTANT: The following painting procedures **MUST** be followed **EXACTLY** for **PROPER ADHESION** and to prevent fish eyes.

1. To remove any mold release contaminants, clean the back of the part first. Using 2 new clean rags, saturate the first rag with plastic prep cleaner* and begin cleaning. Then use the second rag to remove the prep cleaner. Continuously fold both rags to their clean sides during the process. Use 3 sets of new rags throughout the process. This prevents mold release contaminants from transferring to the painted surface.
2. Repeat step one on the front of the part.
3. Rinse the part with water. Apply a generous amount of Ajax® or sand fix* to a red scuff pad* (3M Scotch Brite Brand) and scrub the surface to be painted **THOROUGHLY** (especially where the 2-sided tape is installed, on the back side of the part, and all the hard to reach areas). Then rinse with water and dry. The scrubbed surface should be dull. If any shiny spots show, repeat the process on those areas.
4. Using another set of clean new rags, again clean the surface to be painted with plastic prep cleaner.
5. Spray the surface to be painted with adhesion promoter* including the areas where the 2-sided tape is installed (follow the instructions on the can for application and drying time).
6. Apply 3 to 4 coats of urethane primer* with flex additive* (follow the instructions on the can for application and drying time).
7. Wet sand primer with 600 grit sandpaper. Be careful not to sand through the primer. If you do, you **MUST** clean those areas with plastic prep cleaner, apply adhesion promoter and prime. Once the primer has dried, wet sand the areas that were touched up. Your surface is now ready for paint.

* These items can be purchased at any auto body supply store.

Note: Make sure you PRIME and PAINT the areas where the 2-sided tape is used as you would if it was the finished sided of the part! The tape adheres best when it is applied to a painted surface. Cervini's does not recommend baking parts off the vehicle, if necessary parts MUST be supported properly!