

DIGITAL WIRELESS VIDEO MONITORING SYSTEM FOR SURVEILLANCE RECORDERS (DVRs) / TVs AND MONITORS

Ultra Digital Wireless

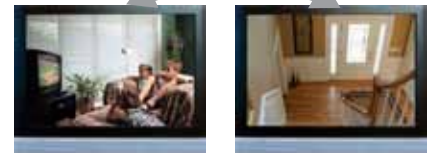


Viewing Options

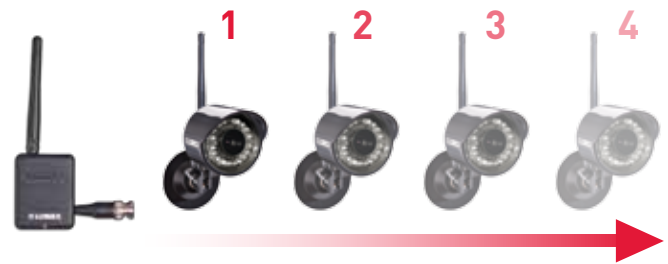
Quad View



Switcher View



Expandible up to Four Cameras



Multi-Channel Wireless Solution



Direct Connect Install



TV/Monitor



DVR

Features

Receiver Features:

- Micro receiver plugs directly into the back of Surveillance Recorder (DVR), TV or monitor
- Connect multiple receivers to the back of a Surveillance Recorder to create a complete wireless surveillance solution
- High gain antenna ensures improved long distance operation
- Viewing Options:
 - Quad mode shows up to 4 camera views on same screen
 - switching mode shows all cameras in full screen
- View in VGA resolution for high quality video or CIF for real time observation
- Safety warning feature notifies you when out of range
- System expandable up to 4 cameras

Camera Features:

- VGA (640x480) resolution camera
- 65ft/20m IR night vision
- Mechanical IR cut filter moves automatically in front or away from lens to enhance color reproduction in all lighting conditions
- Weatherproof* housing ideal for indoor/outdoor use
- Removable SMA antenna can be replaced with higher sensitivity antenna for increased wireless range (sold separately)

* Not intended for submersion in water. Installation in a sheltered location recommended.

LOREX
CONNECT. PROTECT.

LW2100 Series

www.lorextechnology.com

DIGITAL WIRELESS VIDEO MONITORING SYSTEM FOR SURVEILLANCE RECORDERS (DVRs) / TVs AND MONITORS

SPECIFICATIONS

General

| | |
|--------------------------------------|--|
| Transmission Frequency: | ISM 2,400~2,480 MHz |
| Transmission Power: | 16dBm |
| Unobstructed Effective Range: | 450ft / 137m Outdoor / 150ft / 46m Indoor |
| Spread Spectrum: | FHSS |
| Modulation Mode: | GFSK |
| Operating Temperature: | 14 ~ 122° Fahrenheit / - 10 ~ +50° Celsius |
| Operating Humidity: | ←85% |

Camera

| | |
|------------------------------------|---|
| Imaging Sensor Type: | CMOS |
| Picture Total Pixels: | 640 x 480pxl (NTSC) |
| Minimum Illumination: | 0Lux (IR on) |
| Night Vision Distance: | 65ft / 20m |
| Lens: | 4.5mm, F1.5 |
| View Angle: | Diagonal 53° |
| Consumption Current (Max.): | Max 315mA |
| Power Supply: | 12V DC |
| Dimensions (W x D x H): | 75mm x 120mm x 220mm / 3.0" x 4.8" x 8.7" (with antenna) |
| Weight: | 0.28kg / 0.6lbs |

Receiver

| | |
|------------------------------------|---|
| Resolution Supported: | 640 x 480 @ 12fps or 320 x 240 @ 30fps |
| Receiving Sensitivity: | -81dBm |
| Consumption Current (Max.): | 200mA |
| Power Supply: | 12V DC |
| Dimensions (W x D x H): | 18mm x 93mm x 170mm / 0.7" x 3.7" x 6.7" (with antenna attached) |
| Weight: | 0.06kg / 0.15lbs |



Product Information

| | |
|--|---|
| UPC: | LW2100 - English Package - 7-78597-02291-9 LW2100F - Universal Package - 7-78597-12291-6 |
| Package Weight: | LW2100 - 0.95kg / 2.1lbs LW2100F - 1.00kg / 2.2lbs |
| Package Dimensions: (W x D x H) | LW2100 - 299 x 83 x 197mm / 11.8 x 3.2 x 7.8" LW2100F - 302 x 86 x 203mm / 11.9 x 3.4 x 8" |
| Package Cube: | LW2100 - 0.0049m ³ x 0.174cu ft LW2100F - 0.0053m ³ x 0.186cu ft |

Contents

| | |
|-----------------------|---|
| LW2100/LW2100F | 1 x Wireless Quad Micro Receiver 1 x Color Outdoor Night Vision Camera 2 x Power Adapters 1 x Receiver Antenna 1 x BNC Female / RCA Male Adapter 1 x 3ft BNC Extension Cable |
|-----------------------|---|

Accessories

| | |
|--|--|
| LW2100AC1 | Wireless outdoor accessory camera |
| UPC: | 7-78597-22291-3 |
| Package Weight: | 0.76kg/1.68 lbs |
| Package Dimensions: (W x D x H) | 252mm x 202mm x 90mm / 9.9" x 7.9" x 3.5" |
| Package Cube: | 0.004m x 0.161ft |



 **LOREX**[®]
CONNECT. PROTECT.

Lorex Technology Inc.

250 Royal Crest Court, Markham, Ontario L3R 3S1
Canada.

3700 Koppers Street
Baltimore, Maryland 21227,
USA.

©2010 Lorex Technology Inc.
As our product is subject to continuous improvement, Lorex Technology & subsidiaries reserve the right to modify product design, specifications & prices without notice and without incurring any obligation. E&OE